

Autonomous Lake Freighter: An AI Path to a sustainable future

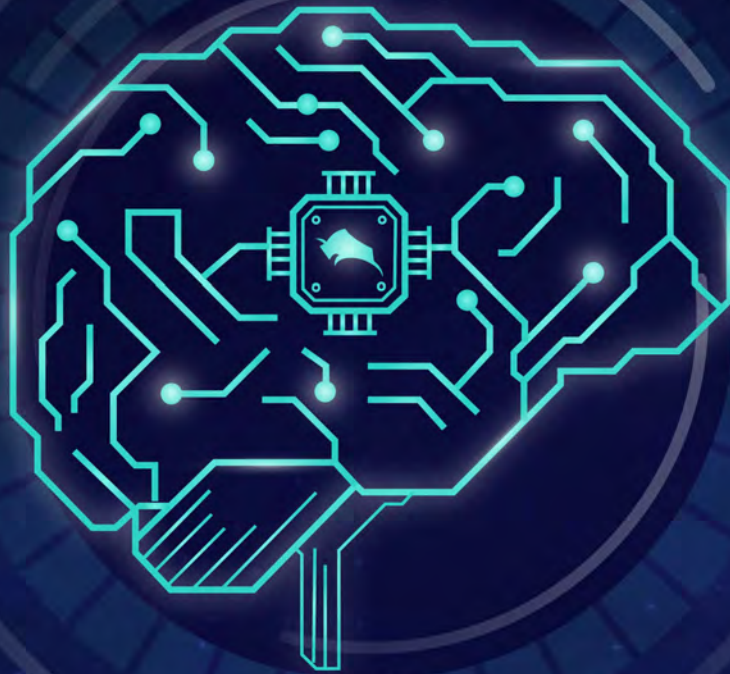
BUFFALO AUTOMATION

VIKRAM@BUFFAUTOMATION.COM

+1 (716) 780-3170



OUR TECHNOLOGY



Trucks: Raven



Ships: AutoMate™




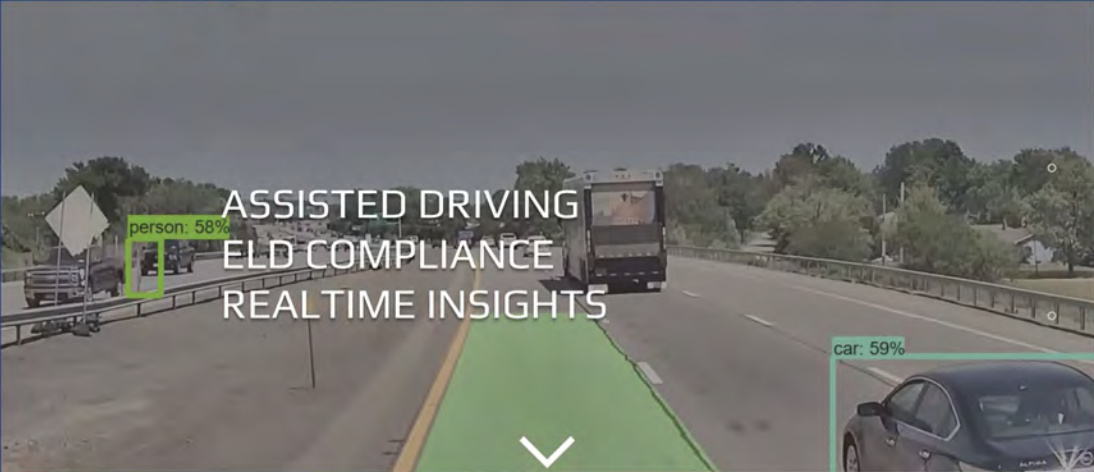
Speedboat: Pegasus



RAVEN



[Home](#) [Product](#) [Contact](#) [Log In](#) [Downloads](#)



ASSISTED DRIVING
ELD COMPLIANCE
REALTIME INSIGHTS

person: 58%

car: 59%

OUR FEATURES

ELD Compliance

Cameras

GPS Tracking

Driver Logs

Vehicle Diagnostics

Violations

Vehicle Malfunctions


FMCSA Data Transfer

Lane Detection

Fuel and Mileage

Reports

Fleet Location



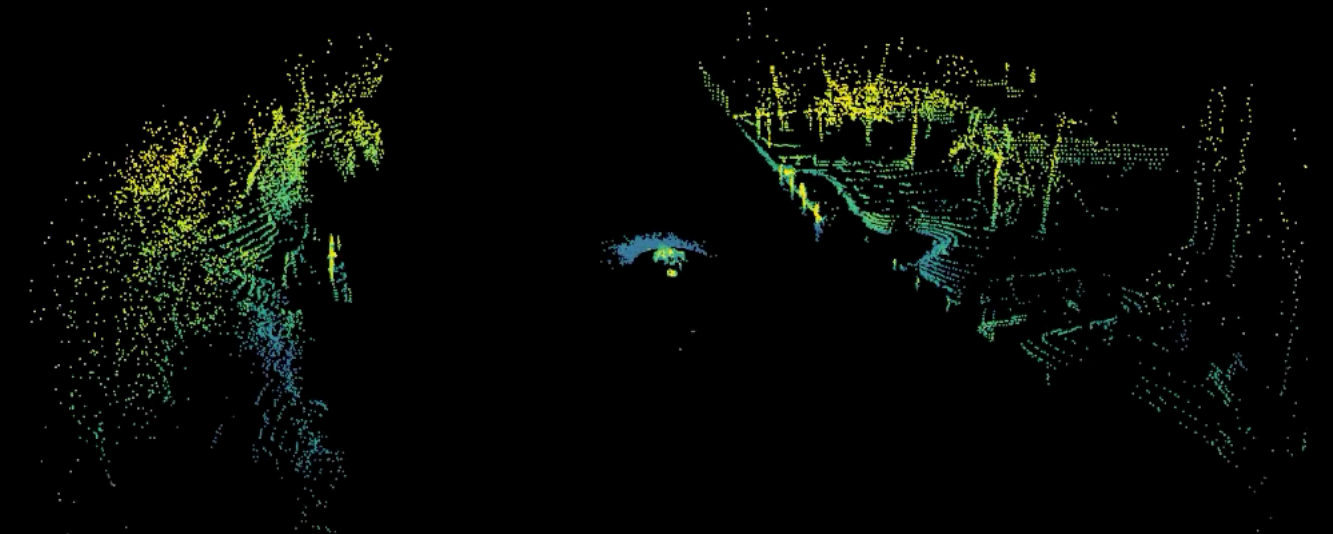
Our WebApp features

- View Live Feed of Cameras.
- Easy, Effortless, Editable Electronic Logs.
- One Click Data Transfer to FMCSA
- Generate Reports for Fuel, Mileage and more.
- Prevent accidents by using our Lane detection and Object detection algorithms.



PEGASUS







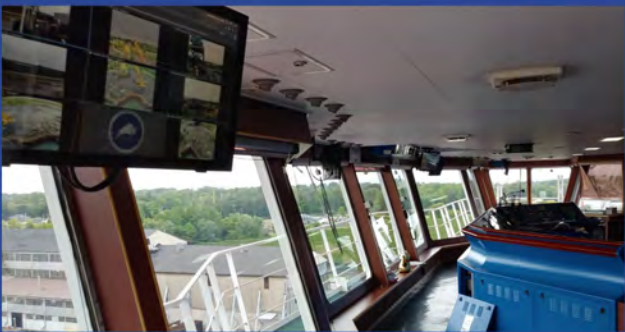
AutoMate™



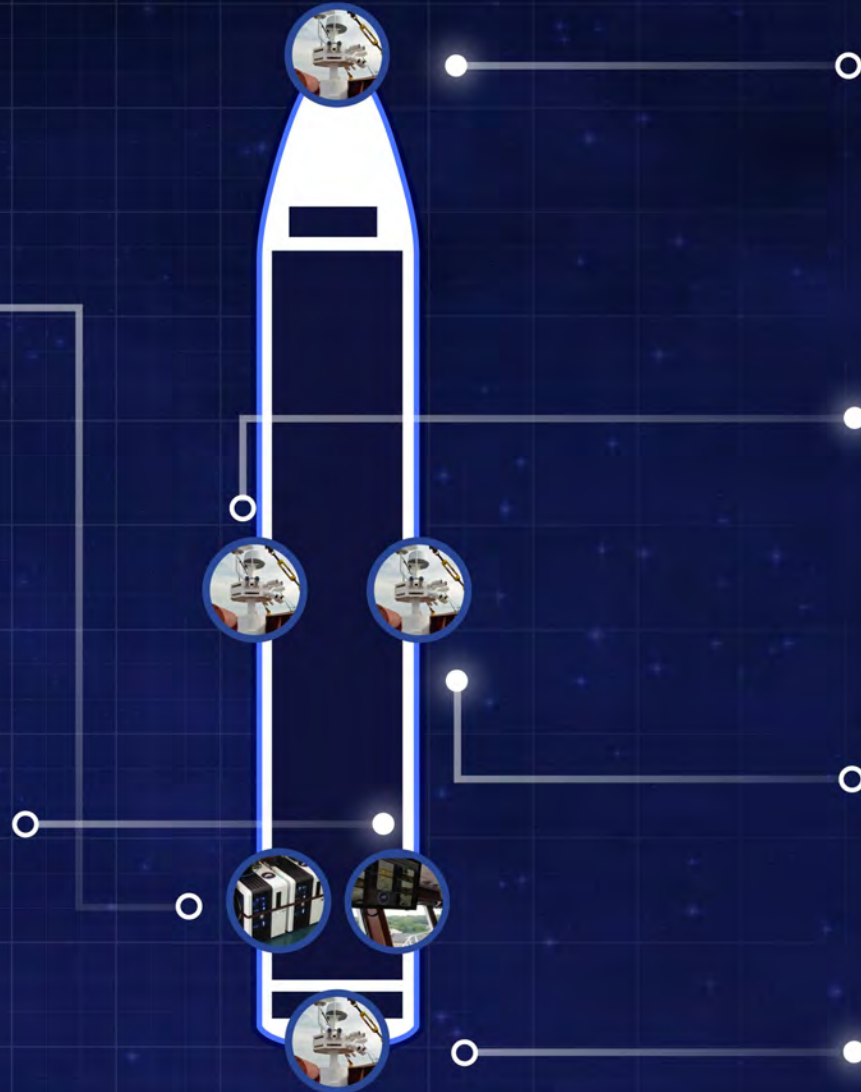
AutoMate EQUIPMENT



Onboard Computers



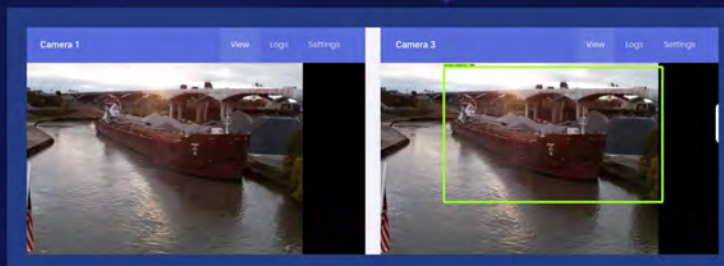
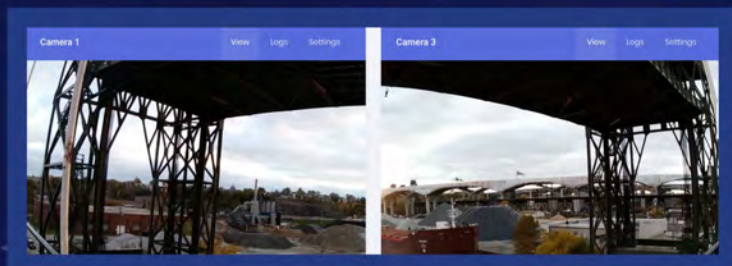
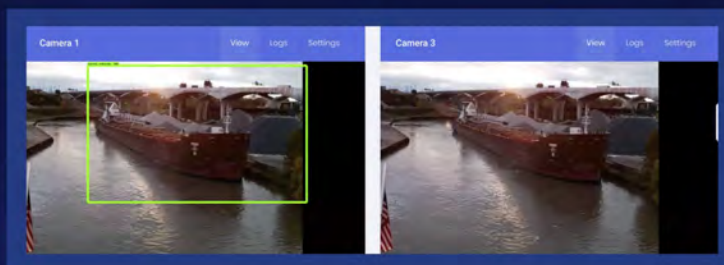
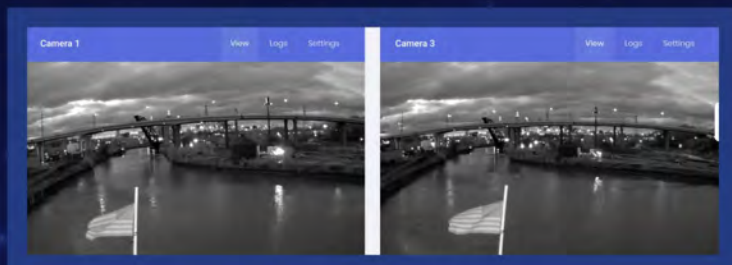
Touch-Screen Displays



Sensor Mast



Situational Awareness



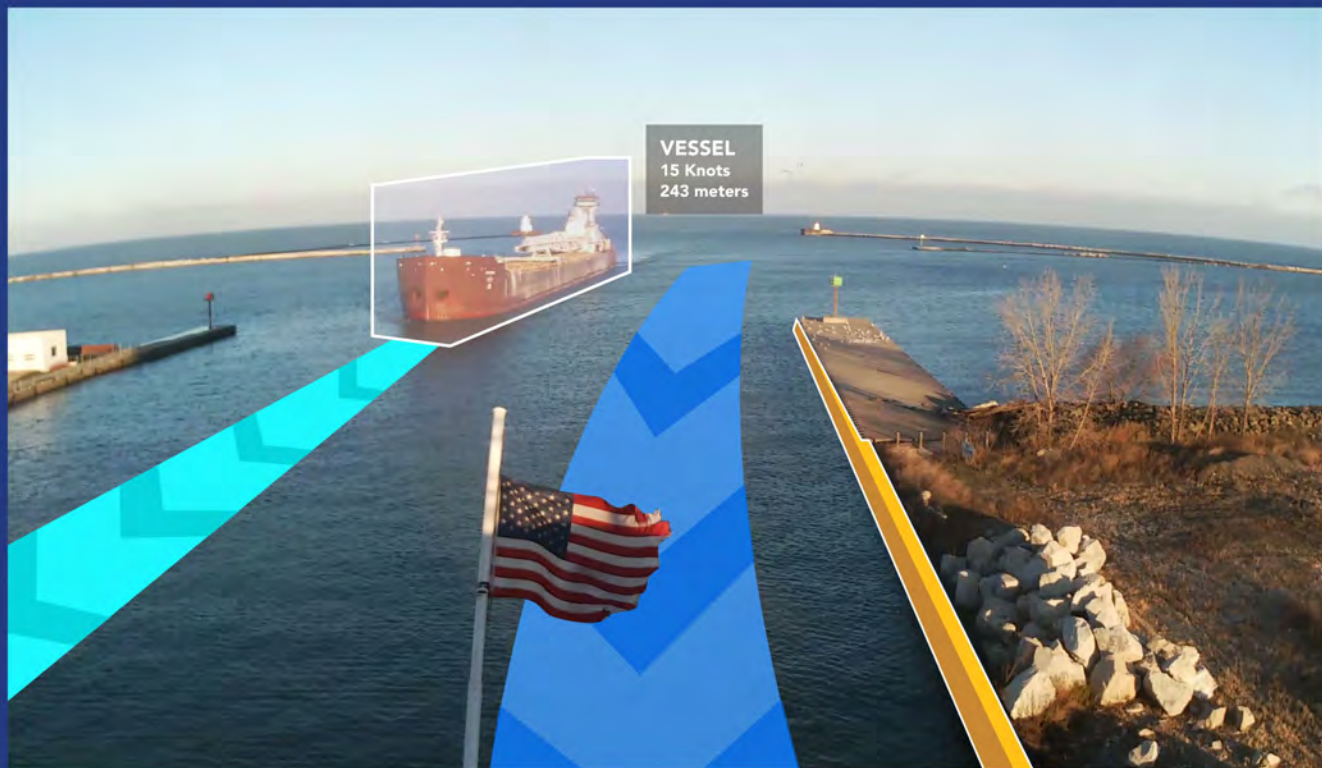
Description

Alerts crew (OOW) on potential hazards in the way.





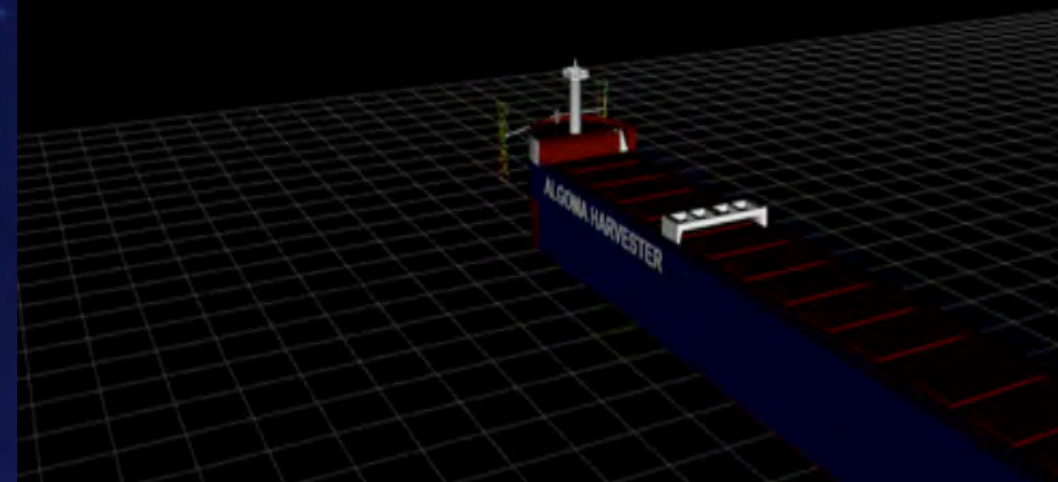
Navigation Assistance



Forecastle
CPA Port = 12.34m

Forecastle
CPA Starboard = 12.92m

Forecastle
Draft= 6.06m

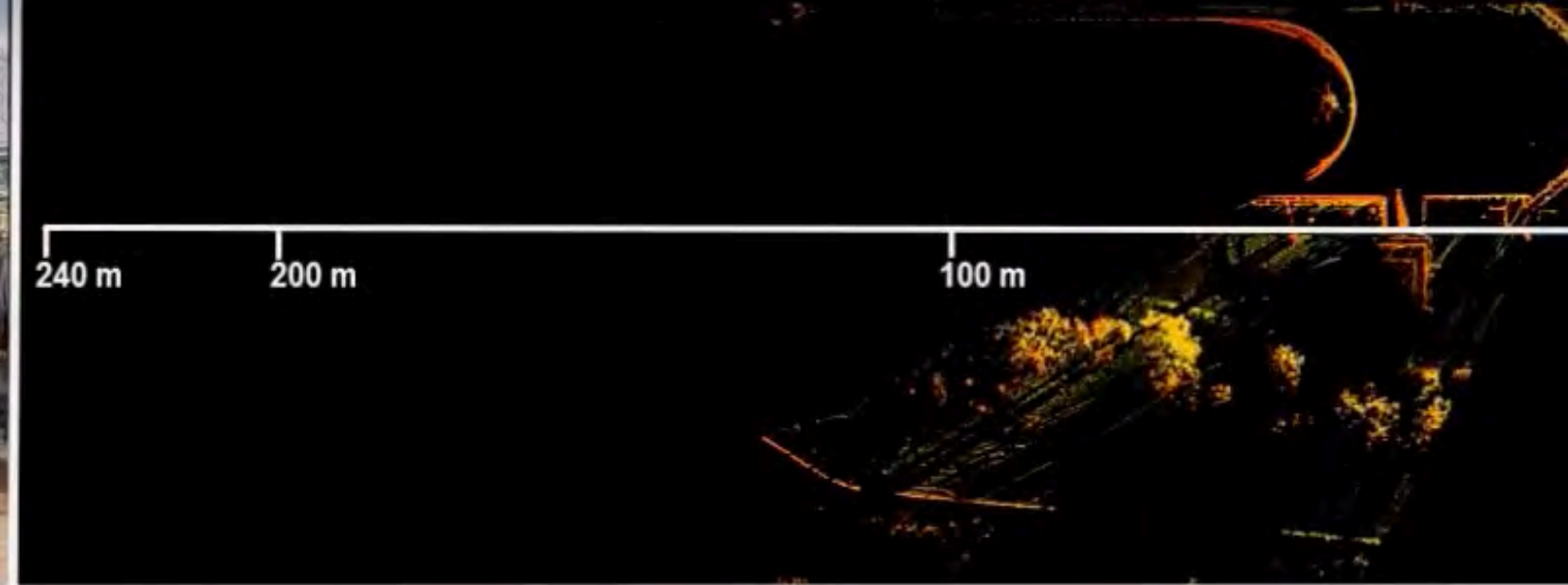




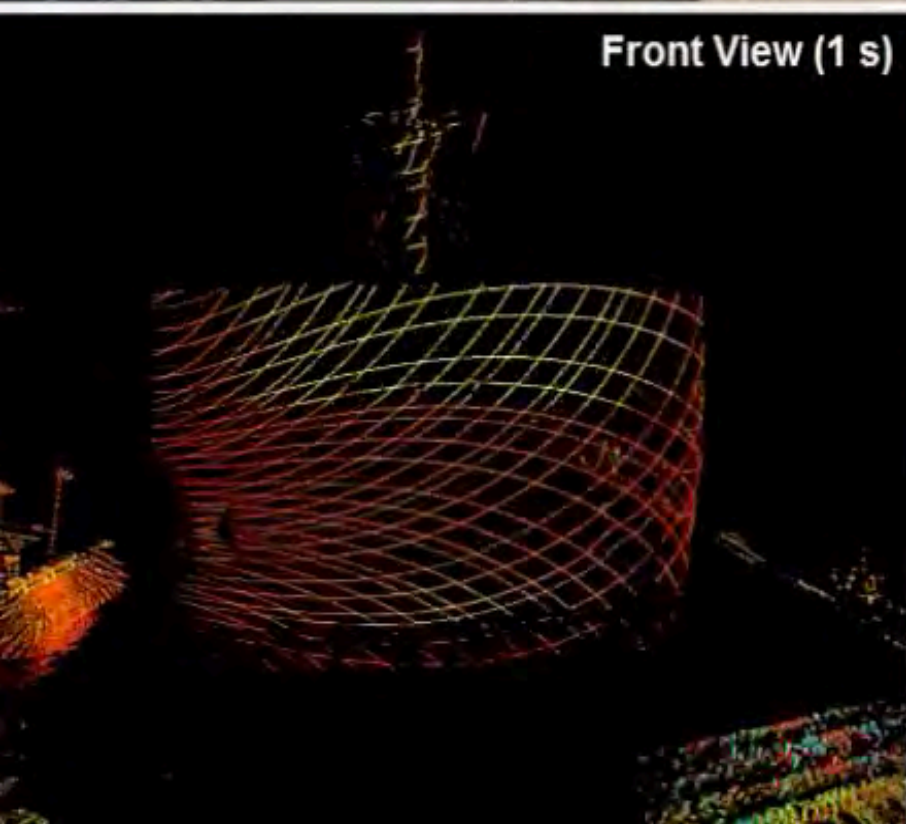




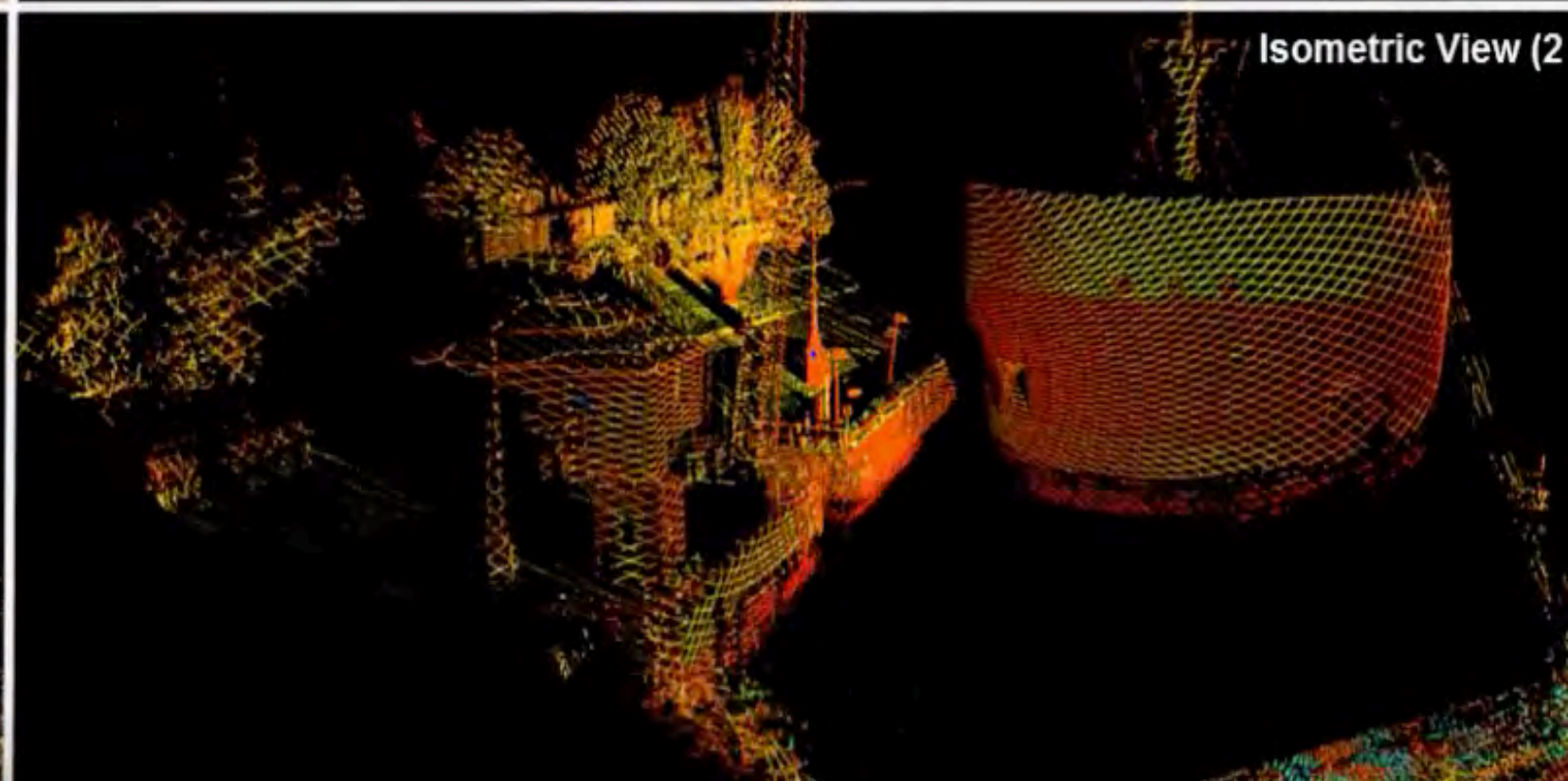
Phase II

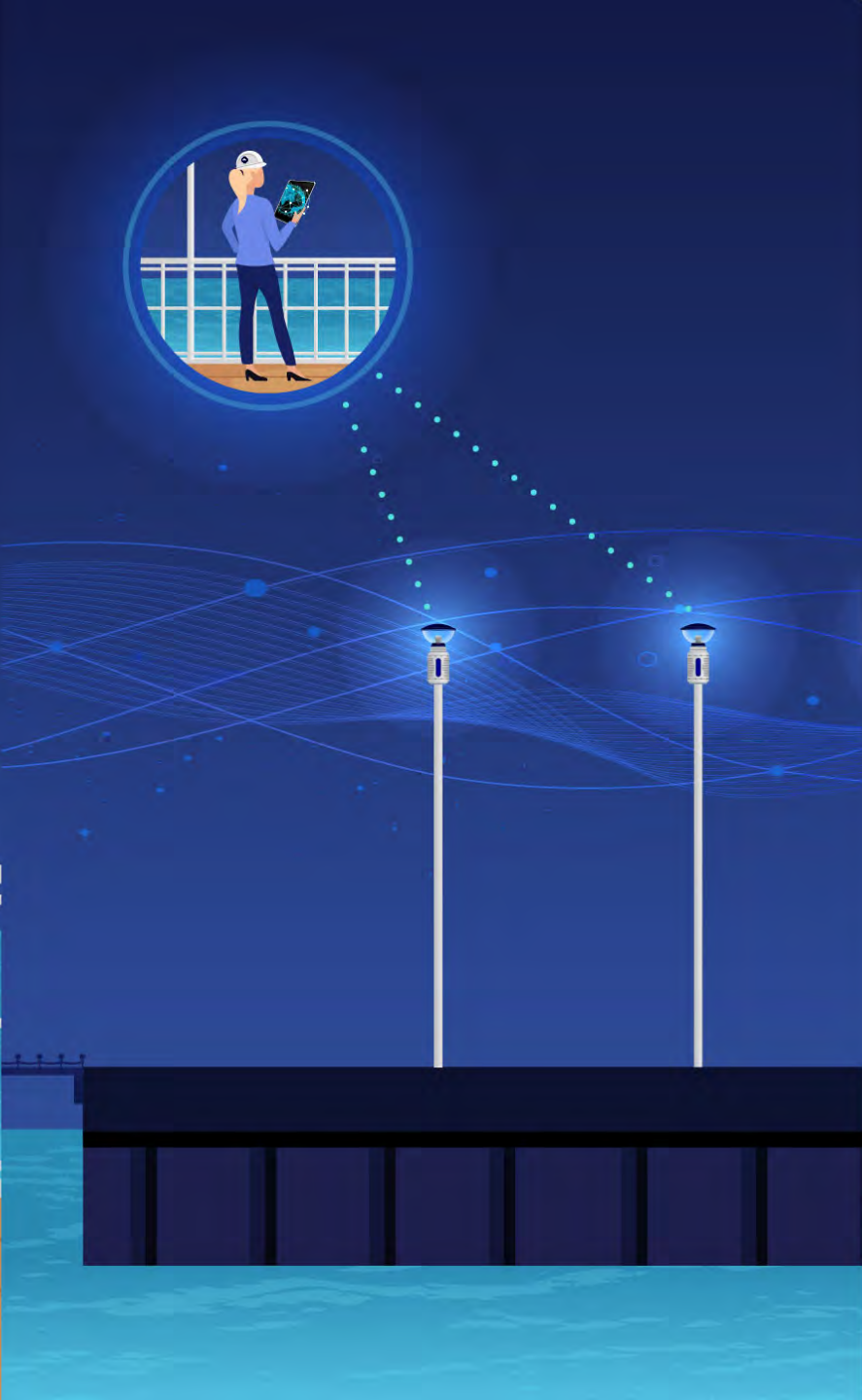


Front View (1 s)



Isometric View (2)







The background image shows a panoramic view of the Buffalo, New York skyline from an elevated position. In the foreground, a black metal railing runs across the frame. To the right of the railing, a white industrial camera or sensor unit is mounted on a pole. The unit has a dome-shaped lens at the top and a rectangular control box below it. The city skyline in the background includes several prominent buildings, such as the Buffalo Tower (a tall, cylindrical building) and the Buffalo City Tower (a tall, pointed building). The Buffalo River flows through the city, and a bridge is visible in the distance. The sky is filled with large, white clouds, and the overall lighting suggests a late afternoon or early morning setting.

Buffalo Automation

vikram@buffautomation.com

716-780-3170